

EXACTECH | EXTREMITIES

Operative Technique



equinox[®]

Equinox[®] with VERASENSE[™]



TABLE OF CONTENTS

DETAILED OPERATIVE TECHNIQUE	1
Surgical Approach	1
INSTRUMENTS	3

INTRODUCTION

Equinox[®] with VERASENSE[®] is the first and only technology that can quantify rTSA tension, helps surgeons find the right joint tension for each patient with no change to the surgical work flow. Based on clinical history of use in the knee, VERASENSE utilizes proprietary sensor technologies to transmit data wirelessly to an intraoperative monitor that enables surgeons to make informed decisions on joint tension and implant position in real time. Additionally, it provides dynamic feedback on glenohumeral joint compressive load through the full ROM.



Figure 1
Sensor and Shim Components

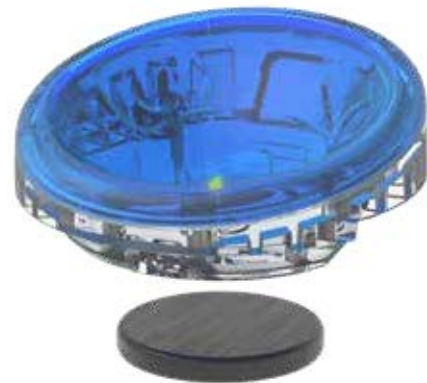


Figure 2
Magnetic Sensor Activation



Figure 3
Sensor and Shim Assembly



Figure 4
Sensor and Tray Trial Assembly

Open the box of the size of **Sensor** you wish to trial, leaving the sterile plastic packaging intact with the Sensor inside (*Figure 1*).

Hold the **Magnet** up to the Sensor inside the plastic packaging until you see the red LED light inside the Sensor turn on and back off, and the prompt appears on the **LinkStation MINI** or **LinkStation MINI Evaluation Kit** to connect the Sensor. Click "OK" on the LinkStation to pair the Sensor (*Figure 2*).

Open the sterile packaging containing the Sensor and **Shims**. Snap the desired plastic Shim (+0mm and +2.5mm) for the liner trial that you wish to assess to the back of the Sensor (*Figure 3*).

Snap the Sensor into the **Humeral Tray** trial (*Figure 4*).

DETAILED OPERATIVE TECHNIQUE

SURGICAL APPROACH & INDICATIONS

Reduce the **Joint** and follow the on-screen instructions to collect load data via the LinkStation MINI or LinkStation MINI Evaluation Kit (*Figure 5*).

When manipulating the arm with the sensor, be sure to hold and support the forearm of the patient without providing additional force across the joint.

Under the “Motions” tab on the LinkStation MINI or LinkStation MINI Evaluation Kit, collect and record all four dynamic ranges of motion and all three static load conditions.

Dynamic Range of Motion Assessments:

- 1) Maximum internal to external rotation at 0 degrees of abduction
- 2) Maximum internal to external rotation at 45 degrees of abduction
- 3) Maximum internal to external rotation at 90 degrees of abduction
- 4) Maximum flexion and extension at 0 degrees of abduction

Static Load Conditions:

- 1) Arm overhead (OH)
- 2) Arm behind back (BB)
- 3) Arm cross body (CB)

Dislocate the joint and use the **Humeral Liner Removal Tool** to remove the Sensor from the Humeral Tray trial. Dispose of the Sensor in an appropriate fashion (*Figure 6*).

Finish the procedure per **Equinox Reverse Shoulder Operative Technique** 718-01-30.

INDICATIONS FOR USE

- Equinox with VERASENSE is indicated for any medical condition in which primary reverse Total Shoulder Arthroplasty (rTSA) would be indicated.
- For use as a tool for adjustment of the humeral shoulder implant to reduce instability from soft tissue tension. Equinox with VERASENSE is sterile, for single patient use.

CONTRAINDICATIONS FOR USE



- Any active or suspected latent infection in or about the shoulder joint.
- Refer to Implant Shoulder System IFU for additional contraindications.



Figure 5
Joint Reduction



Figure 6
Sensor Removal

EXC-EQV38	Equinox with VERASENSE Reverse, Size 38mm	
EXC-EQV42	Equinox with VERASENSE Reverse, Size 42mm	

VERASENSE is manufactured by OrthoSensor, Inc. and distributed by Exactech, Inc.

Exactech, Inc. is proud to have offices and distributors around the globe. For more information about Exactech products available in your country, please visit www.exac.com

For additional device information, refer to the Equinox Shoulder System—Instructions for Use for a device description, indications, contraindications, precautions and warnings. For further product information, please contact Customer Service, Exactech, 2320 NW 66th Court, Gainesville, Florida 32653-1630, USA. (352) 377-1140, (800) 392-2832 or FAX (352) 378-2617.

Exactech, as the manufacturer of this device, does not practice medicine, and is not responsible for recommending the appropriate surgical technique for use on a particular patient. These guidelines are intended to be solely informational and each surgeon must evaluate the appropriateness of these guidelines based on his or her personal medical training and experience. Prior to use of this system, the surgeon should refer to the product package insert for comprehensive warnings, precautions, indications for use, contraindications and adverse effects.

The products discussed herein may be available under different trademarks in different countries. All copyrights, and pending and registered trademarks, are property of Exactech, Inc. This material is intended for the sole use and benefit of the Exactech sales force and physicians. It should not be redistributed, duplicated or disclosed without the express written consent of Exactech. ©2020 Exactech, Inc. 00-0000821 0120



EXACTECH, INC.
2320 NW 66TH COURT
GAINESVILLE, FL 32653 USA

+1 352.377.1140
+1 800.EXACTECH
+1 352.378.2617 (FAX)
www.exac.com